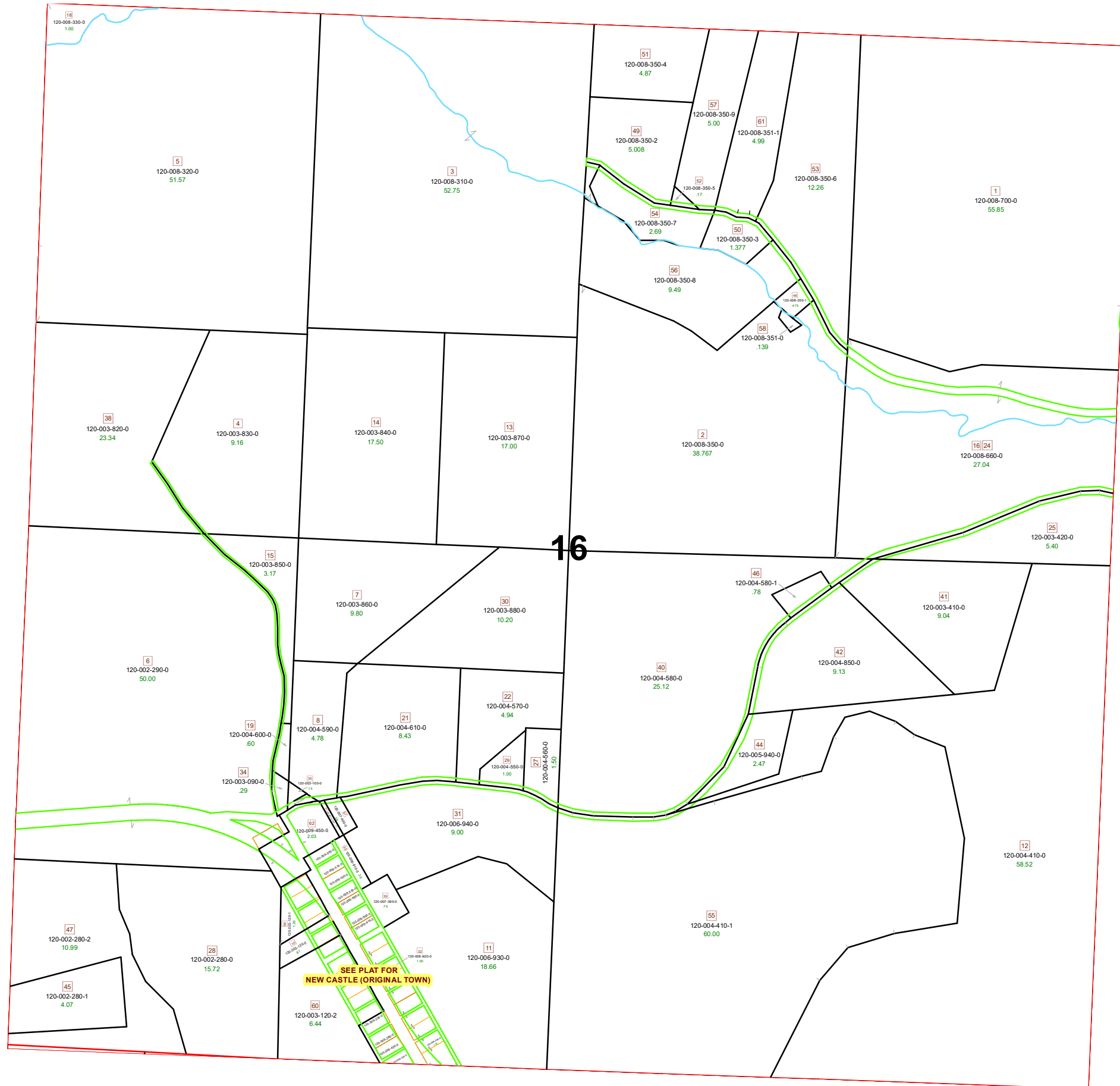
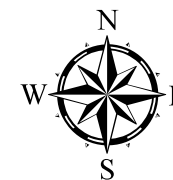


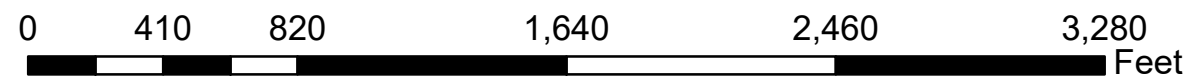
MEIGSVILLE TOWNSHIP SECTION 16 R11 TWP 10 MORGAN COUNTY, OHIO



PIN	VOL	PAG	Owner	LegalDescr	Acres
120-003-850-0	OR220	1359	HART HUBERT L	R11 T10 S16 SD 15	3.17
120-003-870-0	OR220	1359	HART HUBERT L	R11 T10 S16 SD 13	17
120-003-830-0	OR220	1359	HART HUBERT L	R11 T10 S16 SD 4	9.16
120-003-840-0	OR220	1359	HART HUBERT L	R11 T10 S16 SD 14	17.5
120-003-820-0	OR220	1359	HART HUBERT L	R11 T10 S16 SD 38	23.34
120-008-350-9	OR119	275	HOLLOBAUGH RANDY	R11 T10 S16 SD 57	5.004
120-008-350-5	OR83	259	HOLLOBAUGH RANDY L	R11 T10 S16 SD 52	0.173
120-008-350-4	OR83	259	HOLLOBAUGH RANDY L	R11 T10 S16 SD 51	4.874
120-008-350-2	OR83	259	HOLLOBAUGH RANDY L	R11 T10 S16 SD 49	5.008
120-008-350-7	OR140	315	HOLLOBAUGH RANDY L	R11 T10 S16 SD 54	2.692
120-008-351-1	OR215	2762	HOLLOBAUGH RANDY LEE & JENNIFE	R11 T10 S16 SD 61	4.997
120-008-310-0	OR57	115	HOPKINS JAMES M & DARYL D	R11 T10 S16 SD 3	52.75
120-008-320-0	OR36	646	HOPKINS JAMES M & RHONDA C	R11 T10 S16 SD 5 S	51.565
120-008-330-0	OR36	646	HOPKINS JAMES M & RHONDA C	R11 T10 S16 SD 18	1
120-004-600-0	D.V 126	473	KIDD CHESTER JR & SHIRLEY	R11 T10 S16 SD 19	0.6
120-004-550-0	D.V 113	493	KIDD CHESTER JR & SHIRLEY ANN	R11 T10 S16 SD 29	1
120-004-560-0	D.V 113	493	KIDD CHESTER JR & SHIRLEY ANN	R11 T10 S16 SD 27	1.5
120-004-570-0	D.V 113	493	KIDD CHESTER JR & SHIRLEY ANN	R11 T10 S16 SD 22	4.94
120-004-610-0	D.V 126	473	KIDD CHESTER JR & SHIRLEY ANN	R11 T10 S16 SD 21	8.43
120-004-590-0	D.V 126	473	KIDD CHESTER JR & SHIRLEY ANN	R11 T10 S16 SD 8	4.78
120-004-580-0	D.V 132	28	KIDD CHESTER JR & SHIRLEY ANN	R11 T10 S16 SD 40	25.12
120-004-580-1	OR17	514	KIDD ROBERT A	R11 T10 S16 SD 46	0.78
120-005-940-0	OR222	1031	KNIERIM RICHARD F JR	R11 T10 S16 SD 44	2.473
120-008-350-3	OR103	101	MOORE CARL E TRUSTEE OF TRUST	R11 T10 S16 SD 50	1.377
120-008-660-0	OR208	1431	MOORE EDESEL D	R11 T10 S16 SD 16	27.039
120-003-120-0	OR223	2661	NICESWANGER REBECCA	R11 T10 S16 SD 10	0.869
120-009-530-0	D.V 167	687	NORMAN LARRY L & KAREN E	NEWCASTLE SD IN	0
120-009-520-0	D.V 167	687	NORMAN LARRY L & KAREN E	NEWCASTLE SD IN	0
120-009-510-0	D.V 167	687	NORMAN LARRY L & KAREN E	NEWCASTLE SD IN	0
120-009-500-0	D.V 167	687	NORMAN LARRY L & KAREN E	NEWCASTLE SD IN	0
120-006-940-0	OR213	2603	PHILLIS KENNETH D	R11 T10 S16 SD 31	9
120-004-410-1	OR213	2603	PHILLIS KENNETH D	R11 T10 S16 SD 55	59.999
120-009-540-0	OR213	2603	PHILLIS KENNETH D	NEWCASTLE SD OL	1.488
120-006-920-0	OR213	2603	PHILLIS KENNETH D	R11 T10 S16 SD 32	1
120-006-910-0	OR213	2603	PHILLIS KENNETH D	R11 T10 S16 SD 33	0.38
120-006-930-0	OR213	2603	PHILLIS KENNETH D	R11 T10 S16 SD 11	18.66
120-003-410-0	OR221	2667	PONCHAK AMY S	R11 T10 S16 SD 41	9.04
120-003-420-0	OR221	2667	PONCHAK AMY S	R11 T10 S16 SD 25	5.4
120-009-420-0	OR174	168	PRICE DANNY L & MICHAEL L	NEWCASTLE SD SU	0
120-009-280-0	OR174	168	PRICE DANNY L & MICHAEL L	NEWCASTLE SD SU	0
120-003-120-1	OR212	753	RINEHART DANIEL	R11 T10 S16 SD 59	1.289



Boundaries	
	Hydro
	Section
	Roads
	Lot
	Township
	County
	Parcel
	ROW



Disclaimer: The information that these maps contains is for reference purposes only. Please bring any erros to the attention of the Engineer's Office staff. Thank you